



MESSER

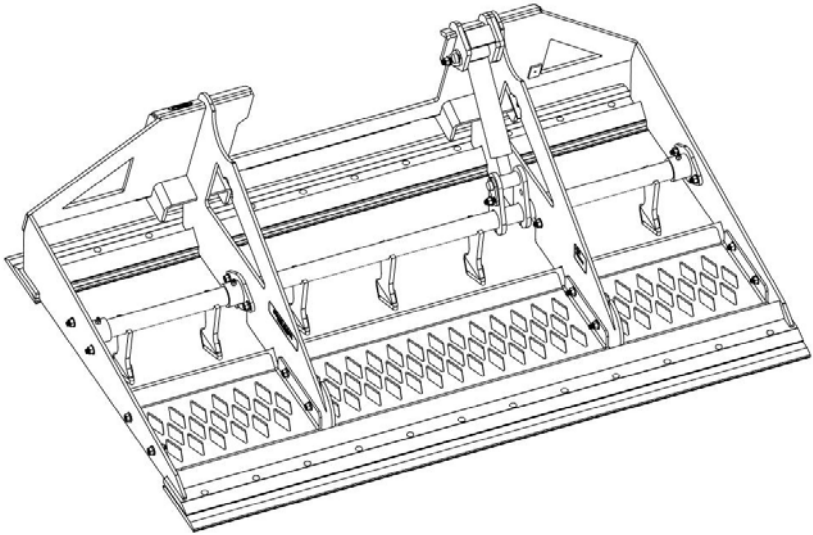
ATTACHMENTS

OPERATOR'S MANUAL

LAND LEVELER

Model LL72, LL84
Serial Number 14163-

Manual# 96372 MAY 2024 ENGLISH



**COPYRIGHT © 2021 MESSER
ATTACHMENTS LLC SAUK
CENTRE, MN PRINTED IN USA
ALL RIGHTS RESERVED**

Introduction

Using This Manual

Your loader operator's manual contains instructions to safely operate the loader. Anyone who operates a loader with this attachment installed must first read, understand and follow the instructions in the loader operator's manual.

This manual contains instructions to safely operate and service the attachment. Anyone who operates or services the attachment must first read, understand and follow the instructions in this manual.

Additional operating or servicing information for the attachment may be provided online, in video, or in other publications. This additional information does not replace, and is not a substitute for reading and following, the instructions in this manual.

The safety alert symbol is shown in **WARNING** statements to alert users to hazards which could cause death or injury. Carefully read and follow the messages.

IMPORTANT notices alert users to instructions which, if not followed, could result in damage. Carefully read and follow the messages.

There may be times when the attachment and loader shown in this manual may not be your exact model. The model shown will be close enough to your attachment or loader to accurately convey the information.

The most current information available is included in this manual. The publisher may revise this manual at any time and is not required to notify users of revisions.

Replacement Manuals

Be sure to include this operator's manual if you sell or transfer ownership of the attachment.

Contact Messer Attachments LLC for a printed manual, or find a downloadable manual on our website.

Using This Attachment

The attachment is designed for ground cutting and grading while traveling in forward or reverse direction. An optional grate kit can be installed to allow for sifting and scooping material and rock. A dirt bucket attachment can be transported on top of the attachment while grading.

The attachment is designed for installation on a full-size loader, connected to the loader's front auxiliary hydraulic couplers.

Introduction

The manufacturer reserves the right to make improvements, and to discontinue or change specifications, models or design without notice and without incurring obligation.

Loader Compatibility

Confirm your loader's Rated Operating Capacity (ROC in the loader operator's manual. Confirm your attachment's ROC in SPECIFICATIONS in this manual.

Do not install the attachment on the loader if the combined weight of the attachment and attachment load will exceed the loader ROC during operation because this may cause difficulty in controlling the loader or may cause loader damage.

Do not exceed the attachment's ROC because this may damage the attachment.

Attachment compatibility with your loader should be confirmed before the initial purchase. If you receive the attachment as part of a later resale or transfer of ownership, contact the manufacturer to confirm the attachment is designed to be used with your loader before you install the attachment.

Product Misuse

Product misuse can cause accidents, injury and death.

The manufacturer of the attachment is not responsible for any harm or injury resulting from product misuse.

Product misuse includes operating or servicing the attachment without following the instructions in this manual and in the loader manuals, using the attachment in any way for which it was not designed, neglecting to confirm loader compatibility, and modifying the attachment.

Modifications

Do not modify the attachment in any way.

Manufacturer Contact

Call Messer Attachments LLC at (833) 352-3477, or see us at www.messerattach.com.

Product Identification

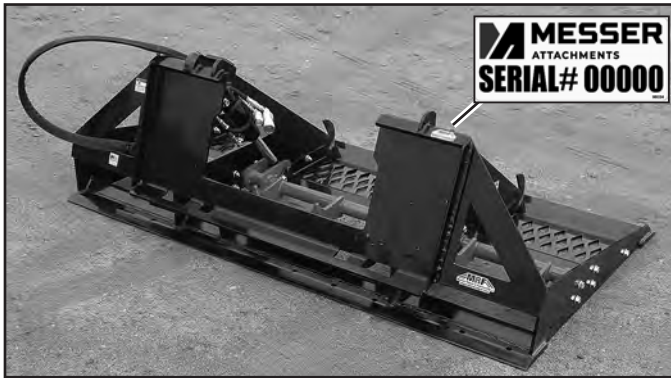
Identification Numbers

Record your product information to provide when you contact the dealer or manufacturer.

Land Leveler

Serial Number 14163-

Serial Number Location



Purchase Date	
Dealer	
Dealer Phone	
Model	
Serial #	

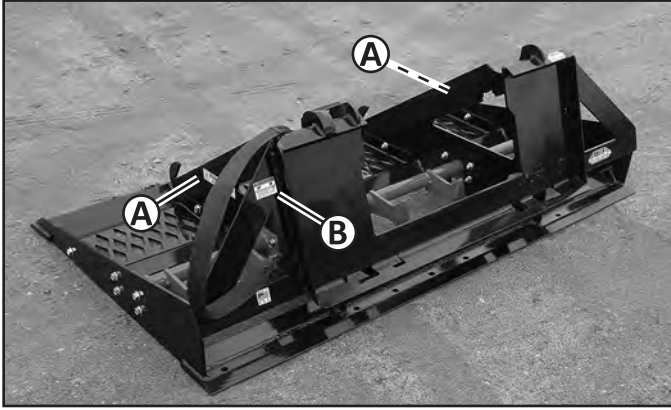
Specifications

Model: 72 Inch	LL72
Length x Width x Height	183 x 119 x 58 cm (72 x 47 x 23 in.)
Weight	249 kg (550 lb.)
Scarifier Weight	52 kg (115 lb.)
Grate Kit Weight	29 kg (63 lb.)
Rated Operating Capacity	1814 kg (4,000 lb.)

Model: 84 Inch	LL84
Length x Width x Height	213 x 119 x 58 cm (84 x 47 x 23 in.)
Weight	256 kg (565 lb.)
Scarifier Weight	57 kg (125 lb.)
Grate Kit Weight	34 kg (75 lb.)
Rated Operating Capacity	1814 kg (4,000 lb.)

Safety Decals

Decal Locations



Location	Description	Part Number
A	Stand Clear Decal	96028
B	Warning Decal	96117

Safety Decals

STAND CLEAR DECAL 96028



STAND CLEAR WHILE IN OPERATION

WARNING DECAL 96117



HIGH PRESSURE FLUID HAZARD

To prevent serious injury or death:

- Relieve pressure on system before repairing, adjusting or disconnecting.
- Wear proper hand and eye protection when searching for leaks. Use wood or cardboard instead of hands.
- Keep all components in good repair.

Safety

Wear Protective Equipment

- Wear gloves to protect hands from burns if hydraulic couplers become hot during operation.
- Never wear sandals or other light footwear when operating or servicing the attachment. Wear protective footwear when handling blades or heavy parts.
- Do not wear loose fitting clothing which may become entangled when operating or servicing the attachment.

Parking Safely

1. Follow the instructions in the loader operator's manual to park the loader safely.
2. Fully lower the attachment to level ground.
3. Stop the loader engine and remove the key from the switch.
4. Do not leave the loader operator seat until the engine and all other moving loader and attachment parts have stopped.
5. Follow the instructions in the loader operator's manual to exit the loader safely. Use the attachment step area if one is provided.

Operating Attachments Safely

- Always be aware of the weight of any loads you are transporting with an attachment. The weight of any load must not exceed the attachment's Rated Operating Capacity. The weight of the attachment combined with the attachment load must not exceed the loader's Rated Operating Capacity.
- Do not allow anyone to operate the attachment unless they have first read and understood the loader and the attachment operator's manuals.
- Do not allow anyone to operate the attachment unless they have first read and understood the safety and warning decals on the loader and on the attachment.
- The attachment owner is responsible for training others to safely operate the attachment, and is responsible for any injuries or harm which occurs while the attachment is being operated.
- If an area to step on the attachment has been provided, be sure to use it when entering and exiting the loader.

Safety

- Before operating, replace any worn or damaged safety decals.
- Before operating, thoroughly inspect the attachment to be sure all hardware (bolts, nuts, etc.) is installed and tightened.
- Before operating, thoroughly inspect the attachment to be sure it is in working order. If the attachment is damaged or otherwise not in working order, do not operate until it has been repaired by a qualified technician.
- Before raising or lowering the attachment be sure the area is clear of bystanders.
- Do not operate the loader or the attachment if you are under the influence of alcohol, drugs, or medications which may cause drowsiness.
- Do not allow children to operate the loader or the attachment.
- Do not allow anyone who has not been trained to operate the loader or the attachment.
- Never allow riders on the attachment.
- Keep hands, feet or other objects away from underneath the attachment while operating.
- Fully lower the attachment to level ground when you are done operating.
- Never leave the attachment unattended while in a raised position.
- When transporting the attachment installed on the loader, travel at a slower speed to maintain control.

Using the Land Leveler Safely

- Inspect the work area before operation to remove any obstacles or mark them to avoid. Check to be sure no lines or pipes or other objects are hidden just beneath the ground surface.

Servicing Safely

- Disconnect the attachment hydraulic hoses from the loader before servicing. Do not service the attachment when the hydraulic hoses are installed on the loader.
- Remove the attachment from the loader before servicing when instructed to do so in this manual.

Safety

- Do not allow anyone to service the attachment unless they have first read and understood the loader and the attachment operator's or service manuals.
- Do not allow anyone to service the attachment unless they have first read and understood the safety and warning decals on the loader and on the attachment.
- The attachment owner is responsible for training others to safely service the attachment, and is responsible for any injuries or harm which occurs while the attachment is being serviced.
- Before inspecting or servicing the attachment, follow the Parking Safely instructions in this manual and disconnect the attachment hydraulic hoses from the loader.
- Always securely block the attachment to prevent accidental release of the lifting mechanism when inspecting or servicing the attachment.

Hydraulic Fluid Safety

- Read and understand the hydraulic safety information in the loader operator's manual before operating or servicing the attachment.
- Use cardboard or a board when you check for a leak.
- Fluid in hydraulic hoses is under extreme pressure. If fluid is injected into your skin seek medical treatment immediately.
- Do not handle any hydraulic components until pressure has been relieved from the system.
- Disconnect the attachment hydraulic hoses from the loader before inspection or service.
- Inspect attachment hydraulic hoses and hose shields for damage or wear before attaching to the loader.

Safety Decals

Safety decals may be installed on the attachment to warn users of safety hazards:

- DANGER decals provide warnings about hazardous situations which will result in death or serious injury if not avoided.
- WARNING decals provide warnings about hazardous situations which could result in death or serious injury if not avoided.

Safety

- CAUTION decals provide warnings about hazardous situations which could result in injury if not avoided.

Read and understand all safety decals before operating or servicing the attachment.

See the Decal Locations illustration in this manual to confirm where decals are installed on the attachment.

Safety decals which are missing, worn or faded must be replaced. Replacement safety decal part numbers are included in this manual. Contact the attachment manufacturer for replacement decals.

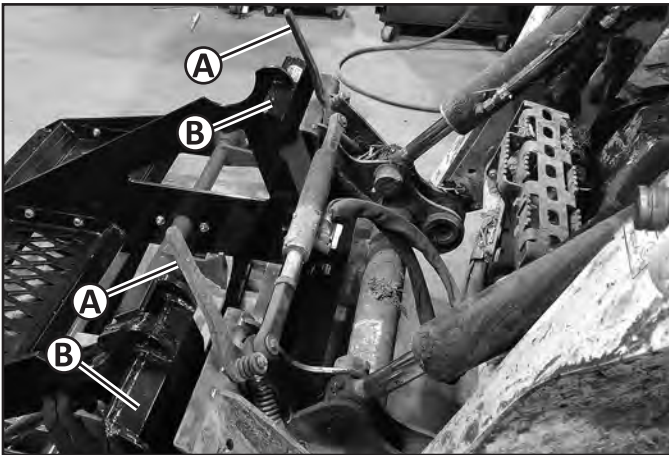
Installing and Removing

Preparing for Installation

1. Check the loader and attachment hydraulic couplers to be sure the surfaces are clean before connecting.
2. Inspect the couplers for damage or wear and replace if needed for proper connection.

Installing the Attachment

1. Follow the instructions in the loader operator's manual to install the attachment and exit the operator station safely.
2. Fully lower the loader lift arms.



 **WARNING**
AVOID INJURY!
Loader attaching plate levers which are operated manually may have spring tensioning. Firmly grasp the levers and move the levers slowly.

3. Move the loader attaching plate levers (A) to the unlocked (up) position either manually or by using the loader controls.

Installing and Removing



IMPORTANT

AVOID DAMAGE!

Attaching plate levers may be damaged if they strike the attachment. Be sure the attaching plate levers do not hit the attachment during installation.

4. Tilt the loader attaching plate forward, and drive the loader forward until the top edge of the loader attaching plate is under the top flange (B) of the attachment mounting frame.
5. Raise the loader lift arms slightly until the attaching plate is fully seated under the top flange.
6. Tilt the attaching plate backward to raise the front of the attachment.



7. Move the loader attaching plate levers (A) to the locked (fully down) position either manually or by using the loader controls.
8. Park the loader. (See Parking Safely in this manual.)

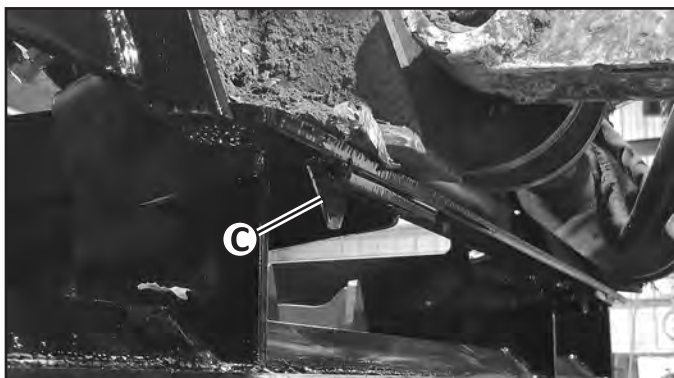
Installing and Removing



IMPORTANT

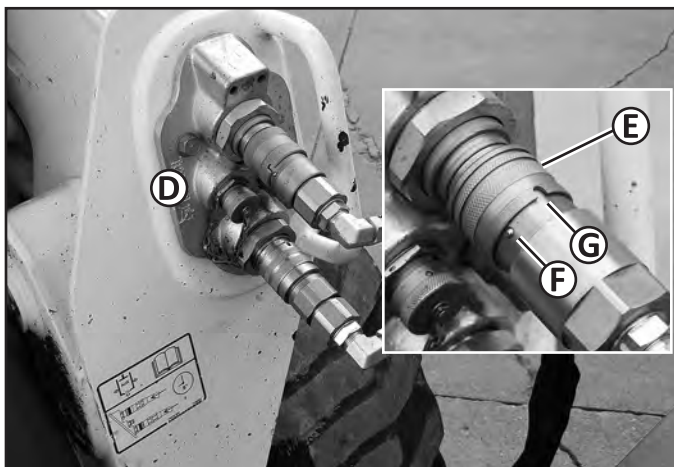
AVOID DAMAGE!

The attachment may come off the loader if it is not secured to the attaching plate. The attaching plate pins or wedges must be extended into the attachment with the levers fully down.



Picture Note: Wedge on left side of attachment shown. Check the wedges or pins on both sides of the attachment.

9. Check to be sure the loader attaching plate pins or wedges (C) extended into the holes in the bottom of the attachment mounting frame. If not, move the loader attaching plate levers to the unlocked (up) position and repeat installation.

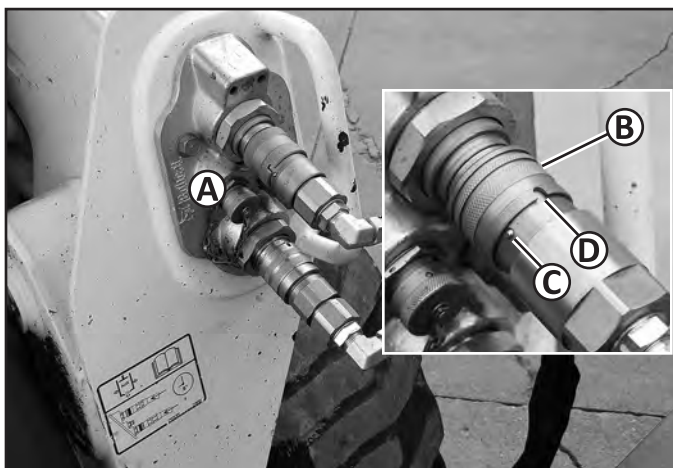


Installing and Removing

10. Connect the attachment hydraulic hoses to the loader's front auxiliary couplers (D).
 - a. Install the male couplers into the female couplers and pull or push the sleeves (E) to be sure they are locked into place.
 - b. Rotate the coupler sleeves as shown so the ball (F) is outside the groove (G) to prevent the coupler disconnecting (Some sleeves may not have this locking mechanism).

Removing the Attachment

1. Follow the instructions in the loader operator's manual to remove the attachment and exit the operator station safely.
2. Fully lower the loader lift arms and the attachment to level ground.
3. Follow instructions in the loader operator's manual to relieve hydraulic pressure in the front auxiliary hydraulic coupler lines.
4. Stop the loader engine.



5. Disconnect the attachment hydraulic hoses from the loader's front auxiliary couplers (A).
 - a. Rotate the coupler sleeves (B) so the ball (C) is aligned with the groove (D) to allow the coupler to disconnect (Some sleeves may not have this locking mechanism).
 - b. Grasp and push or pull the sleeves to disconnect the couplers.
6. Install protective caps on the couplers if they are provided.

Installing and Removing



WARNING

AVOID INJURY!

Loader attaching plate levers which are operated manually may have spring tensioning. Firmly grasp the levers and move the levers slowly.



7. Move the loader attaching plate levers (E) to the unlocked (up) position as shown either manually or by using the loader controls.
8. Tilt the loader attaching plate forward slightly and drive the loader backward until the top edge of the attaching plate clears the top flange (F) of the attachment mounting frame.

Operating

Pre-Operation Inspection

Before starting operation, inspect the area you will be operating in and inspect the attachment.

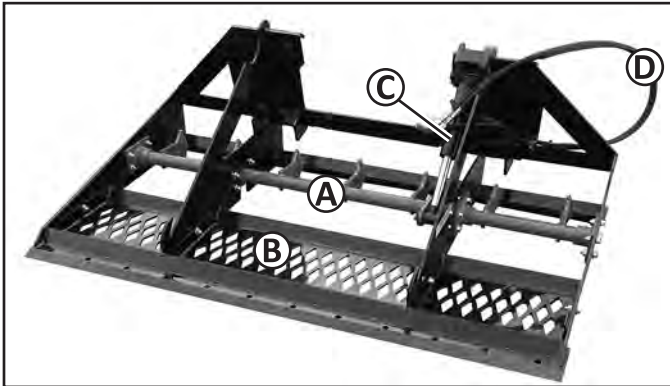
Inspect the Work Area

1. Confirm the area is clear of bystanders including animals. Establish a safety zone by keeping bystanders and animals beyond a 100 foot radius around the attachment when operating.
2. Inspect the work area to confirm there are no large rocks, pipes, lines or other objects just beneath the ground surface. Remove or mark any obstacles to avoid in the work area.

Inspect the Attachment

1. Inspect the attachment to be sure it is in working order. If the attachment is damaged or not in working order, do not operate until it has been repaired by a qualified technician.

Description



A - Scarifier (Optional)

C - Hydraulic Cylinder

B - Grate (Optional Kit)

D - Hydraulic Hoses

Theory of Operation

The Land Leveler hydraulic hoses are connected to the loader front auxiliary hydraulic couplers. The loader's hydraulic controls are used to extend and retract the hydraulic cylinder, which rotates the scarifier to engage the teeth into the ground.

Operating

Operation

1. Follow the instructions in the Installing and Removing section to install the attachment.
2. Park the loader. (See Parking Safely in this manual.)
3. Perform the pre-operation inspection.



Leveling the Ground

1. Use the loader hydraulic controls to angle the leading edge of the attachment to dig into the ground a few inches.
2. Check for bystanders or objects in your travel area and drive forward or backward slowly.
3. Adjust the angle of the leading edge as you travel to dig more or less deeply as needed.
4. If you have installed the grate and collect rocks or other materials dump those outside the work area as needed to continue leveling the ground.

Using the Scarifier

1. Use the loader hydraulic controls to angle the attachment until it is level on the ground.
2. Use the loader hydraulic controls to rotate the scarifier (A) into operating position.

Operating

3. Check for bystanders or objects in your travel area and drive forward or back slowly.
4. Adjust the angle of the scarifier as you travel to dig more or less deeply as needed.
5. If you have installed the grate and collect rocks or other materials dump those outside the work area as needed to continue leveling the ground.

Transporting the Attachment

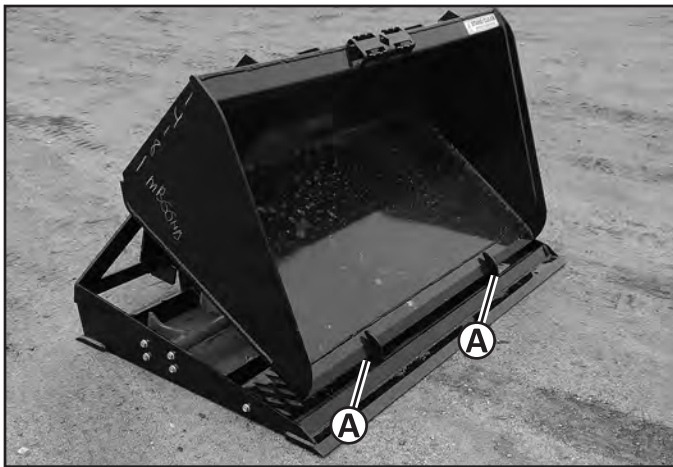
On the Loader

Check to be sure the attachment is correctly installed on the loader before hauling the loader on a trailer or truck. Follow all loader, truck or trailer operator's manual instructions to safely haul the loader.

Hauling the Attachment

Follow all truck or trailer operator's manual instructions to securely fasten the attachment to the truck or trailer with straps or chains.

Transporting a Bucket Attachment



A bucket attachment can be positioned with the cutting edge in the hooks (A) on the front of the Land Leveler to transport the bucket to and from the work area.

Do not haul the Land Leveler attachment with a bucket attachment positioned on top when hauling on a trailer or truck. The bucket must be securely fastened to the truck or trailer with straps or chains apart from the Land Leveler.

Servicing

Service Intervals

Every 8 hours or daily:

- Inspect the attachment and hoses for damage and wear. Replace parts as needed.
- Check and tighten all hardware.

Every 8 hours or daily (If Optional Scarifier is Installed):

- Grease the hydraulic cylinder mount pins.

Grease the scarifier.

Lubrication

Recommended Grease

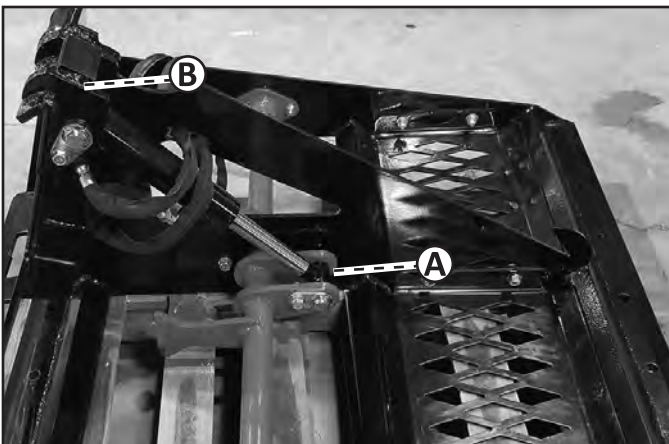
Standard Lithium

Lubricating the Cylinder Mount Pins

1. Park the loader. (See Parking Safely in this manual.)



2. Disconnect the attachment hydraulic hoses from the loader.



3. Lubricate the grease fitting (A) on the cylinder rod end until grease appears in the joints.

Servicing

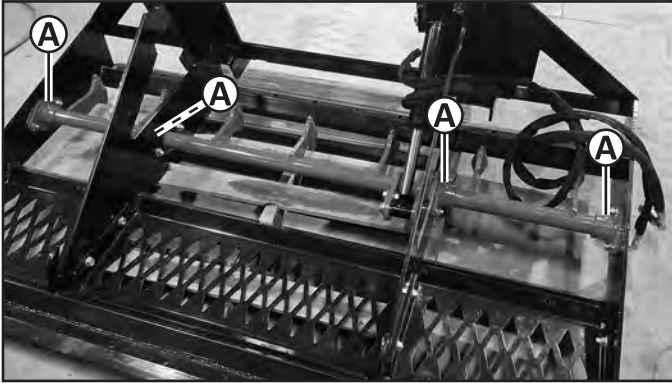
4. Lubricate the grease fitting (B) on the cylinder base end until grease appears in the joints.

Lubricating the Scarifier

1. Park the loader. (See Parking Safely in this manual.)



2. Disconnect the attachment hydraulic hoses from the loader.



3. Lubricate the four grease fittings (A) on the scarifier until grease appears in the joints.

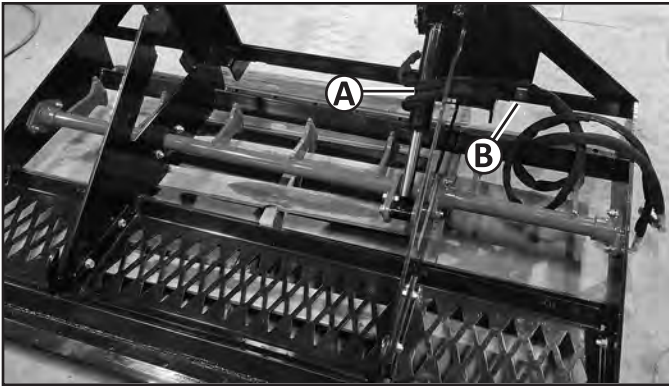
Replacing the Hydraulic Hoses

1. Park the loader. (See Parking Safely in this manual.)



2. Disconnect the attachment hydraulic hoses from the loader.

Servicing



3. Disconnect the hydraulic hose (A) from the cylinder.
4. Remove the hose from the retainer (B) and the attachment frame.
5. Route the new hose through the attachment frame and connect to the cylinder.
6. Install the hoses in the retainer.

Replacing the Hydraulic Cylinder

1. Park the loader. (See Parking Safely in this manual.)

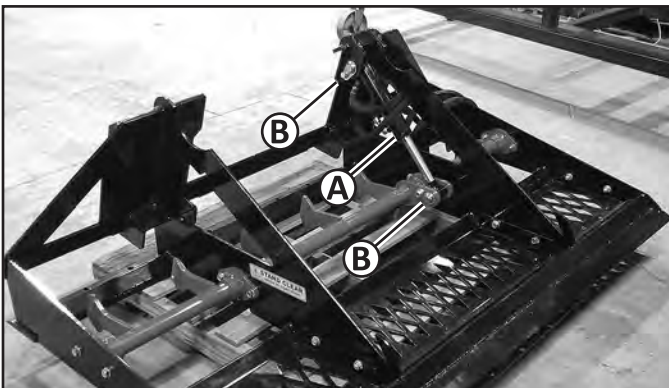


WARNING

AVOID INJURY!

Disconnect the attachment hydraulic hoses from the loader before servicing.

2. Disconnect the attachment hydraulic hoses from the loader.



Servicing

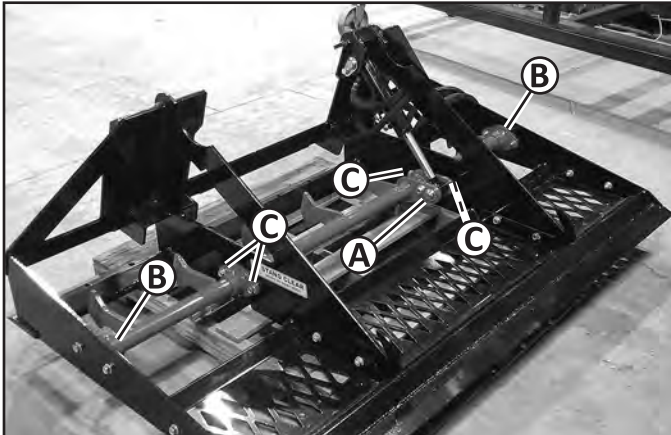
3. Disconnect and remove the hydraulic hoses from the cylinder (A).
4. Remove the bolts, nuts and mounting pin weldments (B) to remove the cylinder.
5. Install the new cylinder with the mounting pin weldments, bolts and nuts.
6. Connect the hydraulic hoses to the cylinder.

Replacing the Scarifier

1. Park the loader. (See Parking Safely in this manual.)



2. Disconnect the attachment hydraulic hoses from the loader.



3. Remove the nut, bolt and mounting pin weldment (A) attaching the cylinder rod end to the scarifier.
4. Remove the four nuts and bolts attaching the two outside mount weldments (B) to the frame.
5. Remove four nuts and bolts (C) attaching the scarifier to the frame and remove the scarifier.
6. Install the new scarifier with the two outside mount weldments with the four bolts and nuts.

Servicing

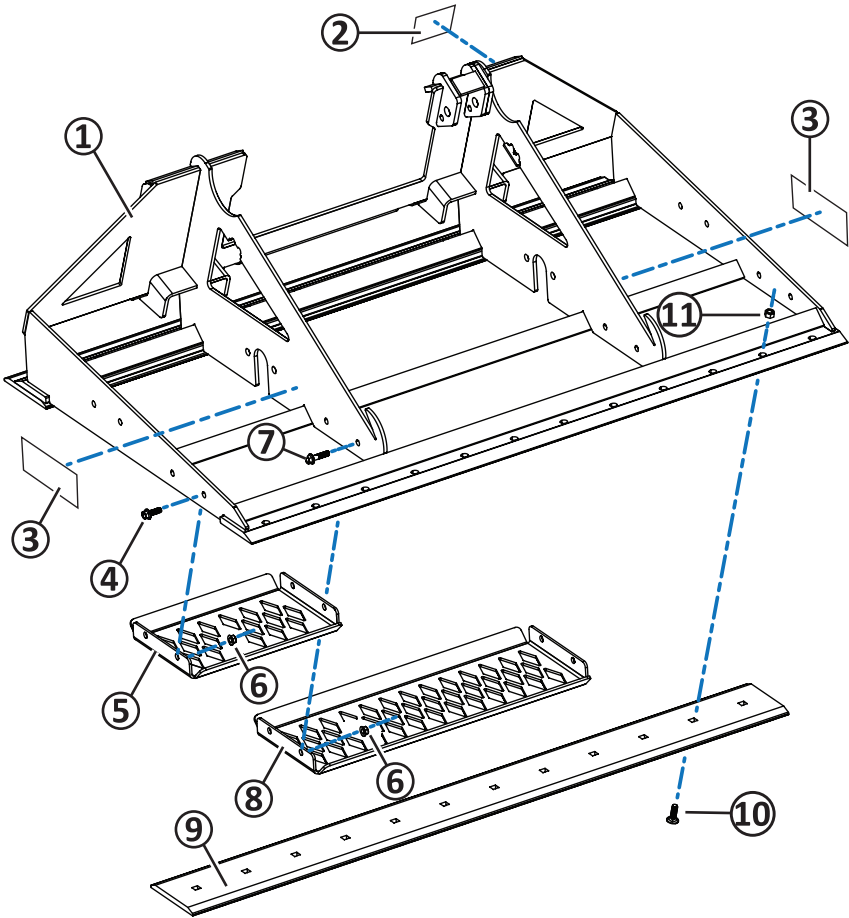
7. Install the other four bolts and nuts to attach the scarifier to the frame.
8. Attach the cylinder rod end to the scarifier with the mounting pin weldment, bolt and nut.
9. Lubricate the cylinder mount pins and the scarifier. (See Lubricating in this manual.)

Servicing

Troubleshooting

Problem	Action
Scarifier won't rotate.	<ol style="list-style-type: none"><li data-bbox="469 248 948 313">1. Check to be sure the attachment hydraulic couplers are fully connected.<li data-bbox="469 329 937 394">2. Check the attachment for hydraulic fluid leaks.<li data-bbox="469 410 948 508">3. See the loader operator manual to check loader hydraulic pressure and flow.<li data-bbox="469 524 958 589">4. Contact the attachment manufacturer about possible cylinder replacement.

Replacement Parts



Replacement Parts

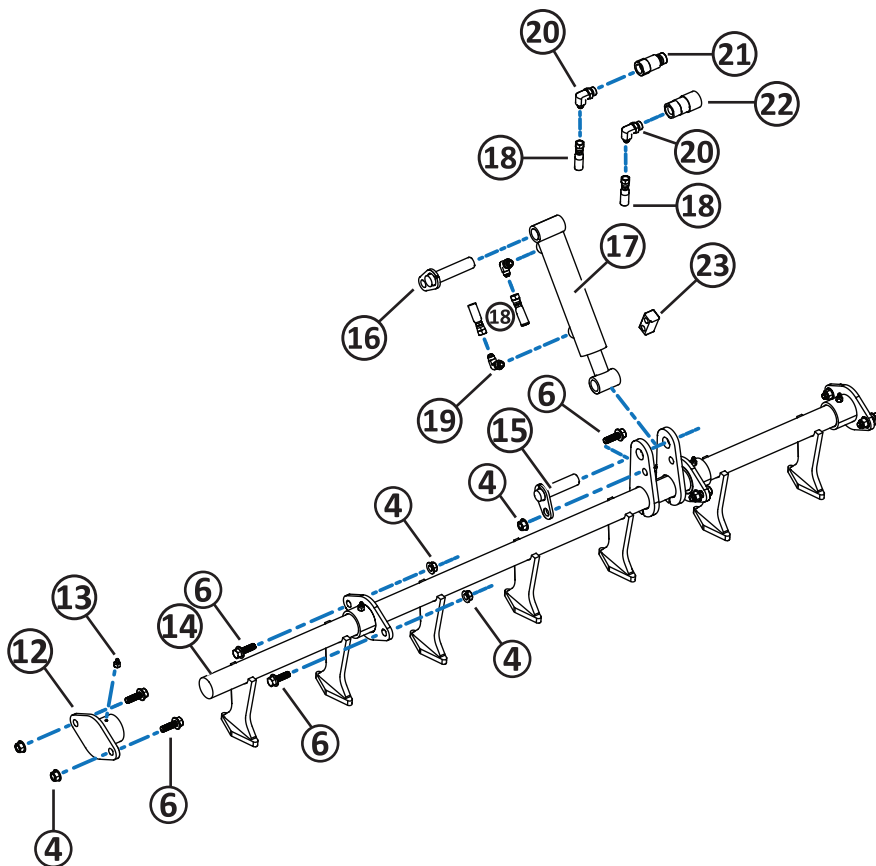
Replacement Parts

Contact Messer Attachments LLC for replacement parts. Part numbers may change without notice.

Item	Qty.	Part Number	Part Description
1	1	09637-P	LL72 Body
	1	09807-P	LL84 Body
2	1	96117	Decal, Warning
3	2	96028	Decal, Stand Clear
4	14	-	Bolt, 1/2-13 x 1-1/2
5	2	09886-P	LL72 Outer Grate
	2	09821-P	LL84 Outer Grate
6	18	-	Nut, 1/2-13
7	4	-	Bolt, Partial Thread, 1/2-13 x 2
8	1	09822-P	Inner Grate
9	2	72BOCE	Cutting Edge, 72 in. (12 holes)
	2	84BOCE	Cutting Edge, 84 in. (14 holes)
10	*	-	Carriage Bolt, .625 x 2
11	*	-	Nut, .625

*Hardware included with cutting edge.

Replacement Parts



Replacement Parts

Item	Qty.	Part Number	Part Description
12	2	09848-P	Outside Mount Weldment
13	4	-	Grease Zerk Straight, 1/8 - 27
14	1	09407-P	Scarifier 72 in.
	1	09813-P	Scarifier 84 in.
15	1	09629	Cylinder Pin Weldment, Rod End
16	1	09751	Cylinder Pin Weldment, Base End
17	1	WCT2X6	Cylinder, Cross Tube, 2 x 6
18	2	96293	LLS 1/4 Hose @ 86 in. OAL (1 hose cylinder rod end to female coupler assembly, 1 hose cylinder base end to male nipple assembly)
19	2	6801-06-06	90° Adapter Fitting
20	2	6801-06-08	90° Adapter Fitting
21	1	96165	Nipple Assembly Male, 1/2 ORB-#8, 3/4-16 SAE
22	1	96164	Coupler Assembly Female, 1/2 ORB-#8, 3/4-16 SAE
23	1	T-2004HS	Hydraulic Clamp, 1/4 in.

Warranty

MESSER ATTACHMENTS LLC

Limited Warranty and Terms and Conditions of Sale

The following limited warranty, and terms and conditions of sale (the “Limited Warranty”) apply to all equipment, products, parts, and goods (any of the foregoing are referred to herein as “Equipment”) sold by Messer Attachments LLC (“Messer”):

1. **Covers All Equipment.** Each purchase of Equipment by a purchaser is expressly made conditional on purchaser’s assent to the terms and conditions in this Limited Warranty.
2. **Limited Warranty.** Messer warrants that for a period of 24 months from the date of purchase, the Equipment will remain free from defects in material and workmanship under normal use and proper maintenance. Messer’s obligation under the warranty shall be limited to the repair or replacement (at Messer’s option) of the Equipment. Notwithstanding the foregoing, if the Equipment is used for commercial purposes or is rented or leased out by the purchaser, then, the foregoing warranty shall only be for a period of 180 days and not 24 months.
3. **No Warranty For Equipment Components From Third Parties.** Notwithstanding the limited warranty terms set forth above, MESSER OFFERS NO WARRANTY WHATSOEVER WITH RESPECT TO ANY COMPONENTS OF THE EQUIPMENT MADE OR PROVIDED TO MESSER BY OTHER MANUFACTURERS, PRODUCERS, OR SELLERS (the “Purchased Components”). The sole and exclusive warranty for each the Purchased Components shall be limited to the express written warranty with respect to the Purchased Component as provided by the manufacturer, producer, or seller of such Purchased Component. Messer’s responsibility and liability for the Purchased Components shall be limited to the assignment of the Purchased Components’ express written warranties applicable to the Purchased Components. Purchased Components include, without limitation, the following: axles, tires and rims; trailer hitch components and jacks; hydraulic pumps, motors, cylinders and components; and bales spears, pallet tines, and bucket teeth.
4. **No Other Warranties.** THE FOREGOING REPAIR AND REPLACEMENT OBLIGATIONS IN SECTION 2 ARE IN LIEU OF ALL OTHER WARRANTIES, LIABILITIES AND OBLIGATIONS, INCLUDING ALL WARRANTIES OF MERCHANTABILITY, OF FITNESS FOR A PARTICULAR PURPOSE OR OTHERWISE, EXPRESSED OR IMPLIED IN FACT OR BY LAW, AND STATE MESSER’S ENTIRE AND EXCLUSIVE LIABILITY AND PURCHASER’S EXCLUSIVE REMEDY FOR ANY CLAIM IN CONNECTION WITH THE SALE AND PURCHASE OF EQUIPMENT (AND ALL COMPONENTS THEREOF), THEIR DESIGN, SUITABILITY FOR USE, INSTALLATION OR OPERATIONS.

Warranty

5. Location of Warranty Repairs. All warranty repairs pursuant to this Limited Warranty shall be made at Messer's corporate manufacturing plant, or other location as determined by Messer, at its discretion. Purchaser shall be responsible for and pay for any transportation expenses necessary for Limited Warranty repairs.
6. Limited Warranty Voidable. The limited warranty herein is void and deemed waived if the purchaser fails to give written notice to Messer of any alleged defect under the limited warranty herein within 20 days of its discovery; or (a) purchaser or parties other than Messer or its authorized representatives attempts to remedy or fix the alleged Equipment defects; or (b) purchaser has used the Equipment for purposes it was not intended to be used for; or (c) purchaser has not operated the Equipment in a manner consistent with Messer's instructions for the Equipment; or (d) the Equipment has been modified, altered, abused, or misused; or (e) the Equipment has been damaged pursuant to accident, fire, flood, or other Act of God.
7. No Consequential Damages. IN NO EVENT SHALL MESSER BE LIABLE FOR ANY DIRECT, INDIRECT, SPECIAL OR CONSEQUENTIAL DAMAGES WHATSOEVER, AND MESSER'S LIABILITY, UNDER NO CIRCUMSTANCES, WILL EXCEED THE PRICE PAID FOR THE EQUIPMENT FOR WHICH LIABILITY IS CLAIMED.
8. Governing Law. This contract shall be governed by the laws of the State of Minnesota.
9. Arbitration. Any controversy or claim arising out of or relating to the limited warranty provided herein, or any alleged breach thereof, shall be settled exclusively by arbitration in accordance with the Rules of the American Arbitration Association, and judgment upon the award rendered by the arbitrator may be entered in any court having jurisdiction thereof. The arbitration shall be conducted in Minneapolis, MN, by one arbitrator selected by Messer and Purchaser, or, if they cannot agree, the President of the American Arbitration Association.

Rev. 5-24

