



**QUALITY FARM EQUIPMENT
AND
SKID STEER ATTACHMENTS**

PRODUCT CATALOG

**FARM TESTED
FARMER INSPIRED**



BALE HANDLING

Square & Combo Bale Forks	4-5
Round Bale Spears	4
Bale Spear Extensions	5
Replacement Bale Spears	6
Forklift Mounted Bale Spear	6
Bale Squeezer	7

DAIRY

Stall Plow/Bedding Extractor	8-9
Feed Pusher	10
Freestall Groomer	11
Manure Scraper	12

WOOD SPLITTING & TREE HANDLING

Wood Splitter/Tree Shear	13
Tree & Post Puller	14
Stump Bucket	14
Tree Scoop	15
Brush & Root Grapple	15

MATERIAL HANDLING

Rock Bucket	16
Rock Bucket Grapple	16
Manure Fork	17
Manure Fork Grapple	17
Material Bucket	18
Material Bucket Grapple	18
High Capacity HD Bucket	19
Bolt On Cutting Edges	19
Land Leveler	20

SNOW REMOVAL

Sand Spreader	21
Snow Bucket	21

TOWING & LIFTING

Pallet Forks	22
Fork Extensions	22
Fork Hitch Mover	23
3 PT. Gooseneck Tow Bar	23
Equipment Movers	23
Telescoping Boom	24

QUICK-TACH PLATES & ADAPTERS

Quick-Tach Plates	25-26
Quick-Tach Adapters	27
3PT-QTP	28
3PT-PTO	28

WARRANTY

Limited Warranty & Terms	29
--------------------------	----

FARM TESTED. FARMER INSPIRED.

We believe it takes a farmer to know a farmer, and the equipment they depend on to make a living. Messer Attachments is family owned by third-generation farmers in central Minnesota who have a rich history in dairy business. For more than 10 years, Nathan and Jana Messer have been proud to dedicate their time in the company's day-to-day operations in order to provide high quality attachments.

You'll notice the difference in the quality of our products.



WHAT SETS MESSER APART?

2 YEAR LIMITED WARRANTY

Great designs

We research, design and test all of the products we build—from unique, custom-built prototypes to standard farm equipment. We're always looking for ways to improve the products we manufacture and give you the best value for your hard-earned dollars. With an engineer and draftsman a part of our talented design staff, our designs will give you maximum performance right from the start. You'll get a higher net lift capacity; tough tensile strength in strategic, high-stress areas; and smart, forward-thinking designs that don't hold moisture or collect excess debris.

Quality materials

To get the best product, we start with the best steel at the right thickness. Your equipment is built tough, but doesn't have to work harder than it should.

**FARM RATED QUALITY
AT REALISTIC PRICES**

Fine craftsmanship

Nothing takes the place of our experienced craftsmanship. We take the time to assemble and weld our products by hand, including rounding off sharp corners, making sure everything lines up, and ensuring the surface is clean, sandblasted and ready for powder coating.

Long-lasting results

We prime and powder coat each product for a durable, corrosion-resistant finish that keeps showing up strong season after season. The process is also environmentally-friendly.

Guaranteed function

Before our hydraulic products leave the shop, they're pressure tested with oil to make sure hoses are routed properly and they're free of leaks. Then, they're shipped complete with couplers and wet with oil so you can get right to work.




SQUARE & COMBO BALE FORKS

⚙️ SPECS

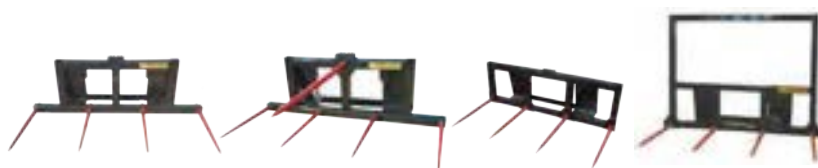
	5' 3-TINE	5' 4-TINE	5' 3-TINE HD
Model #	SBF60000332	CBF60149332	SBF60000336HD
Overall Width x Height	60" x 22"		
Top Tines/ Usable Tine Length	NA	1 at 44"	NA
Top Tine Diameter/ Load Rating (lbs)	NA	1.75"/2700	NA
Bottom Tines/ Usable Tine Length	3 at 27"		3 at 31"
Bottom Tine Diameter/ Load Rating (lbs)	1.375"/1350		1.75"/2700
Tine Center to Center	29"		
Approximate Weight (lbs)	175	210	

ROUND BALE SPEARS

⚙️ SPECS

 SPECS	2-TINE	2-TINE HD	3-TINE	3-TINE HD
Model #	RBS45000249	RBS45000249HD	RBS45149224	RBS45149224HD
Overall Width x Height	51" x 21"		45" x 21"	
Top Tines/ Usable Tine Length	NA		1 at 44"	1 at 42"
Top Tine Diameter/ Load Rating (lbs)	NA		1.75"/2700	2"/4500
Bottom Tines/ Usable Tine Length	2 at 44"	2 at 42"	2 at 19"	
Bottom Tine Diameter/ Load Rating (lbs)	1.75"/2700	2"/4500	1.375"/1350	
Tine Center to Center	42"			
Approximate Weight (lbs)	215	225	185	195

- All tines are forged and tapered for strength and ease of use
- Easily remove tines by removing a nut on the back
- 18° Quick-Tach angle to prevent tire damage
- Custom spear frames available to special order



5 1/2' 4-TINE

5 1/2' 5-TINE

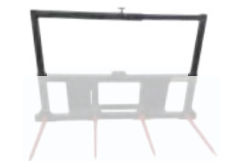
6' 4-TINE HD

6' 4-TINE HD
HIGH BACK

SBF66000432	CBF66149432	SBF72000436HD	SBF72000436HD45
66" x 22"		72" x 22"	72" x 48"
NA	1 at 44"	NA	
NA	1.75"/2700	NA	
4 at 27"		4 at 31"	
1.375"/1350		1.75"/2700	
21"		23"	
190	225	250	310

BALE SPEAR EXTENSIONS

SPECS

2 PC. SELF
STORING
UPRIGHTS 24"1 PC.
ADJUSTABLE
HD2 PC. 3RD
BALE
EXTENSION
HD2 PC. 4TH
BALE
EXTENSION
HD

Model #	Overall Length/ Usable Length	Approximate Weight (lbs)	Used With
2BS24	30"/24"	30	Bale Spear Frame (all models)
2BAHD	36"/24"	62	
3BRHD	36"/30"	28	2BS24 OR 2BAHD
4BRHD	74"/62"	55	





REPLACEMENT SHW GERMAN BALE SPEARS

⚙️ SPECS

	Model #	Overall/ Usable Length	Diameter/Load Rating (lbs)	Weight (lbs)
CON 1	CON-1-24	24"/19"	1.375"/1,350	7
	CON-1-32	32"/27"	1.375"/1,350	8
	CON-1-39	39"/34"	1.375"/1,350	8
	CON-1-43	43"/38"	1.375"/1,350	9
	CON-1-49	49"/44"	1.375"/1,350	10
	CON-1 SLEEVE	4.75"	1.75"	3
CON 2	CON-2-32	32"/27"	1.75"/2,700	15
	CON-2-36	36"/31"	1.75"/2,700	16
	CON-2-39	39"/34"	1.75"/2,700	16
	CON-2-43	43"/38"	1.75"/2,700	18
	CON-2-49	49"/44"	1.75"/2,700	22
	CON-2-55	55"/50"	1.75"/2,700	24
CON 3	CON-2 SLEEVE	4.75"	2.19"	3
	CON-3-49	49"/42"	2"/4,500	28
	CON-3 SLEEVE	6.5"	2.5"	4



★ LOAD RATING 24" OUT FROM SLEEVE

FORKLIFT MOUNTED BALE SPEAR

⚙️ SPECS

Model #	FL2-CL2	FL2-CL3	FL3-CL2	FL3-CL3
Overall Height	21"	25"	21"	25"
Rail Spacing	16"	20"	16"	20"
Approximate Weight (lbs)	31	38	35	43

- Includes a sleeve, tines purchased separately (see above)
- Easily attaches to rail style Pallet Fork or Fork Lift carriage
- Convert your pallet fork into a bale spear



BALE SQUEEZER



BALE HANDLING



⚙️ SPECS

Model #	B596
Overall Width Closed	48"
Overall Height x Length	35" x 51"
Minimum Jaw Opening	10"
Maximum Jaw Opening	95"
Approximate Weight (lbs)	590

- 3 1/2" Bore x 14" stroke, 3500 psi cylinder for extreme pressure clamping
- Compact frame design with no sharp corners or edges to damage bales
- 4 heavy duty springs on each side control sway and ensure paddles stay centered
- All pivots are greasable
- Unique paddle design efficiently grabs up to 6' diameter round bales and up to 7' long square bales





STALL PLOW BEDDING EXTRACTOR



DAIRY



TOUGH ENOUGH FOR THE COMMERCIAL DAIRYMAN

SAVE TIME AND MONEY!

Lower somatic cell and bacteria count by removing contaminated bedding every 6 months

THREE GOOD REASONS TO OWN AN MRF STALL PLOW VS. AUGER STYLE EXTRACTOR:

- 1. PERFORMANCE** - Cleans over 2X more stalls per hour = less labor cost and time that cows are displaced from their beds.
- 2. HYGIENIC** - Scrapes cleaner and removes more contaminated bedding.
- 3. COST EFFECTIVE** - Quick ROI as plow has no moving parts to maintain and costs 2/3 less.

MesserAttach.com

QUICKLY CLEANS STALLS IN 3 EASY STEPS



DAIRY

1ST PASS



2ND PASS (OPTIONAL)



CLEAN UP



SP8X24



SP8X243PT

GEAR SPECS

Model #

Overall Depth

Overall Width (Arm Collapsed) x Height

Approximate Weight (lbs)

QUICK TACH

3 POINT

SP8X24

SP8X243PT

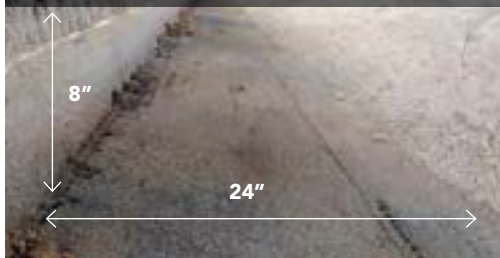
41"

85" x 30"

510

460

GUTTER WIDTH & DEPTH



- Hydraulic telescoping arm is greaseable to allow 8" of smooth adjustment while plowing
- 24" of manual in and out arm adjustment to find the perfect setting for any skid steer
- Abrasion resistant (AR200) steel blade designed to remove 24" of material with depths of 6 to 8 inches
- Plow angle infinitely adjusts from 5 to 60 degrees with 35 degrees of pitch adjustment
- Single pass removal of material capable at speeds in excess of 5 mph





FEED PUSHER



⚙️ SPECS

	1.5"	2"	1.5"	2"
Model #	FP8X1.5	FP8X2	FPV8X1.5	FPV8X2
Angle Range of Adjustment	18° - 97°		53° - 63°	
Dimensions @ 60°(LxWxH)	85"x89"x25"		84"x108"x25"	
Approximate Weight (lbs)	645	710	975	1,060

- 3/8" Pivoting quick tach, with grease zerks, greatly increases rubber life
- Maximum performance is guaranteed with our infinitely adjustable angle
- 8' long blade constructed from 5/16" material
- Reversible rubber edge with up to 6" of wear
- Long lasting ULTRA grade rubber is more flexible and can withstand temps as low as -30° F



⚙️ OPTIONS

Replacement Rubber

Kit to convert to V pusher

Model #		Weight (lbs)
FP1.5RUBBER	Replacement ULTRA 1.5" reversible rubber edge	65
FP2RUBBER	Replacement ULTRA 2" reversible rubber edge	85
FPV1.5-KIT	Kit to convert single pusher to V pusher	330
FPV2-KIT	Kit to convert single pusher to V pusher	350

**TOUGH ENOUGH FOR THE
COMMERCIAL DAIRYMAN**





FREESTALL GROOMER

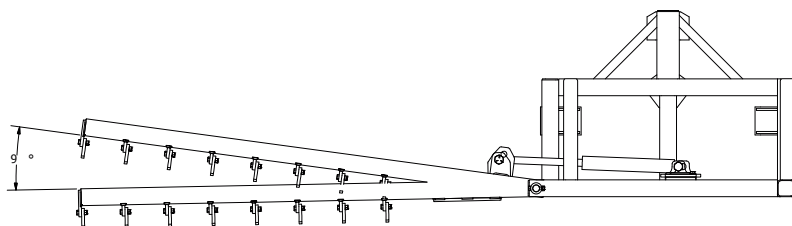


⚙️ SPECS

QUICK TACH

3 POINT

Model #	FSG	FSG3PT
Overall Depth	35"	
Overall Width x Height (lowered)	128"x21"	129"x 34"
Overall Width x Height (raised)	48"x84"	
Number of Teeth	8	
Length of Teeth	4"	
Approximate Weight (lbs)	450	430



- Adjustable grooming angle to slope bedding in stalls
- 2" bore, 3500 psi cylinder
- 1/4" thick wall tubing for frame work
- All pivots are greaseable
- Bolt-on bidirectional teeth made out of 1/2" abrasion resistant (AR400) steel
- 7 3/4" center to center spacing of teeth
- Includes abrasion resistant (AR400) curb wear pad





MANURE SCRAPER



⚙️ SPECS

	6'	7'	8'	10'
Model #	MS72	MS84	MS96	MS120
Overall Length x Width x Height	57" x 72" x 31"	63" x 84" x 31"	73" x 96" x 31"	81" x 118" x 31"
Approximate Weight (lbs)	700	890	1025	1350

- Frame is constructed from 3/8" steel and powder coated for long life
- Safe and convenient step through design
- Frame is designed to last multiple tire changes
- Back scraper is standard for cleanout of material
- Chain bolt is recessed



⚙️ OPTIONS

Model #		Weight (lbs)
MS72-KIT	Replacement rubber tire & back scraper kit for 6' manure scraper	395
MS84-KIT	Replacement rubber tire & back scraper kit for 7' manure scraper	560
MS96-KIT	Replacement rubber tire & back scraper kit for 8' manure scraper	665
MS120-KIT	Replacement rubber tire & back scraper kit for 10' manure scraper	890

Replacement Kit



WOOD SPLITTER | TREE SHEAR



BOOM OUT



UNASSEMBLED



SIDEWAYS



Splitting with cross cut blades (included)



Shearing with optional tree catcher



Prune limbs up to 8"

⚙️ SPECS

	BOOM OUT		SIDEWAYS	
	WS5X36			
Model #				
Overall Length/Depth	106"		27"	
Overall Width x Height	45" x 23"		99" x 23"	
Maximum Throat Opening	36"			
Cylinder Push Force (at 3,000 psi)	30 Tons			
Approximate Weight (lbs)	985			

- The bolt together design allows users to assemble it to one of 2 positions. Whether trimming or shearing trees, cutting logs to length, or just splitting wood, this one attachment can be configured to do it all!
- 10" tall blade is made out of 1" thick high strength steel
- 5" x 36" - 3,500 psi welded cylinder (includes guard)
- Can be set up boom out to prune limbs 16' high
- Works with standard or high flow
- Recommended for machines with a rated operated capacity of at least 1,500 lbs.



Optional Tree Catcher

Cross Cut Blades (included)



⚙️ OPTIONS

	Model #	Weight (lbs)
Wood Splitter Tree Catcher	WSTC5X36	115
Replacement Cross Cut Blades (Includes bolts)	WS5X36CC	14



TREE & POST PULLER

SPECS

Model #	TP8X14
Overall Width x Height	45" x 23"
Overall Length	45"
Maximum Tree Diameter	8"
Maximum Jaw Opening	14"
Approximate Weight (lbs)	330



- Easily clear trees & fence lines
- Effectively removes trees up to 8" depending on tree species, machine size, and soil type/moisture
- Teeth made of 1/2" hardened steel
- Comes standard with base end cylinder guard

STUMP BUCKET



SPECS

Model #	SB60A
Overall Width x Height	48" x 21"
Overall Length	60.5"
Bucket width at cut edge	12"
Bucket width at mounting plate	26"
Approximate Weight (lbs)	400

- Constructed out of 1/2" material
- Serrated teeth on top edge of bucket for better gripping power
- 3/4" x 8" cut edge with 3 replaceable digger teeth
- Solid welds inside and out for increased strength
- Curved bottom for better digging leverage & break-out force

TREE SCOOP



⚙️ SPECS

Model #	TS36	TS48
Overall Width x Height	45" x 20"	48" x 27"
Overall Length	39"	48"
Approximate Weight (lbs)	235	375

- Turns a skid steer into an economical tree, bush, and perennial mover
- Entire unit made of 3/8" plate steel
- Sharpened angle cutting blade for easy digging

BRUSH & ROOT GRAPPLE



⚙️ SPECS

	72"	78"	85"
Model #	BG72	BG78	BG85
Overall Width x Height	72" x 30"	79" x 30"	85" x 30"
Overall Depth	44"		
Thickness of Teeth	1/2" Grade 50 (30% stronger)		
Spacing Between Teeth	6"		
Grapple Jaw Opening	42"		
Cylinders/Cylinder Size	2 at 2"x 8" 3500 psi welded cross tube		
Approximate Weight (lbs)	755	790	815

- Easily handles logs, roots, stumps, and brush
- Teeth are connected to one another for added strength
- Dual grapple hooks that operate independently, made from 1/2" Grade 50 (30% stronger)
- All pivots are greasable
- Comes standard with base end cylinder guards

⚙️ OPTIONS

	Model #	Weight
Bolt On Side Kit	RBS-KIT	52
Rod End Guard Kit	RG-WCT-KIT	18



RBS-KIT



RG-WCT-KIT





ROCK BUCKET



⚙️ SPECS

	48"	61"	68"	75"	82"	88"
Model #	RB48	RB61	RB68	RB75	RB82	RB88
Overall Width x Height	48" x 22"	62" x 22"	69" x 22"	75" x 22"	82" x 22"	89" x 22"
Overall Depth	42"					
Thickness of Teeth	3/8" Grade 50 (30% stronger)					
Spacing Between Teeth	3"					
Approximate Weight (lbs)	430	530	580	630	680	730

- Includes a flat bar on the rear to allow this attachment to double as a land leveler
- Easily pick up rocks and leave the dirt in the field
- Features a rock dam and tooth notch to hold back rocks while digging
- Excellent high visibility design
- Teeth are connected to one another via 3/4" x 2" flat for added strength
- Abrasion resistant (AR400) steel cutting edge

ROCK BUCKET GRAPPLE



⚙️ SPECS

	68"	75"	82"	88"
Model #	RBG68	RBG75	RBG82	RBG88
Overall Width x Height	69" x 30"	75" x 30"	82" x 30"	89" x 30"
Overall Depth	42"			
Thickness of Teeth	3/8" Grade 50 (30% stronger)			
Spacing Between Teeth	3"			
Grapple Jaw Opening	42"			
Cylinders/Cylinder Size	2 at 2"x 8" - 3500 psi welded crosstube			
Approximate Weight (lbs)	875	935	980	1025

- Includes all features of rock buckets above
- Dual grapple hooks that operate independently, made from 1/2" grade 50 plate (30% stronger)
- Comes standard with base end cylinder guards
- Removable bolt on sides allow for extra capacity (included)

⚙️ OPTIONS

	Model #	Weight (lbs)
Rod End Cylinder Guard Kit	RG-WCT-KIT	18





MANURE FORK



GEAR SPECS

	60"	68"	75"	84"
Model #	MF60	MF68	MF75	MF84
Overall Width x Height	60" x 25"	68" x 25"	75" x 25"	84" x 25"
Overall Depth	38"			
Number of Tines	8	9	10	11
Tines Center to Center	8"			
Approximate Weight (lbs)	380	415	450	485

- 3/16" steel formed back with 3" x 3" tubing on top edge
- Removable 36" long tines made from 1.75" spring steel in tapered sleeve
- Front support plate strengthens leading edge of bucket with a self cleaning design

MANURE FORK GRAPPLE



GEAR SPECS

	60"	68"	75"	84"
Model #	MFG60	MFG68	MFG75	MFG84
Overall Width x Height	60" x 31"	68" x 31"	75" x 31"	84" x 31"
Overall Depth	38"			
Grapple Jaw Opening	42"			
Number of Tines	8	9	10	11
Tines Center to Center	8"			
Cylinders/Cylinder Size	2 at 2" x 8" 3500 psi welded cross tube			
Approximate Weight (lbs)	700	750	795	840

- Includes all features of manure forks above
- 1/4" steel formed back with 3" x 3" tubing on top edge
- Dual grapple hooks that operate independently, made from 1/2" Grade 50 (30% stronger)
- Comes standard with base end cylinder guards

GEAR OPTIONS

	Model #	Weight (lbs)
Rod End Cylinder Guard Kit	RG-WCT-KIT	18





MATERIAL BUCKET



SPECS

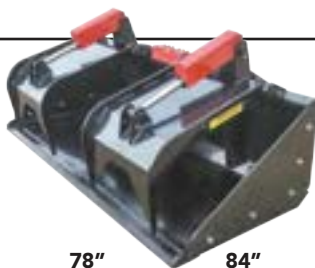
	60"	66"	72"	78"	84"
Light Duty 3/16" Model #	MB60LD	MB66LD	MB72LD	NA	
Light Duty Weight	330	350	365	NA	
Standard Duty 3/16" Model #	MB60SD	MB66SD	MB72SD	MB78SD	NA
Standard Duty Weight	420	445	470	485	NA
Heavy Duty 1/4" Model #	NA	MB66HD	MB72HD	MB78HD	MB84HD
Heavy Duty Weight	NA	585	610	645	685
Overall Width x Height	60" x 22"	66" x 22"	72" x 22"	78" x 22"	84" x 22"
Overall Depth	38"				
Capacity/Struck (cubic ft)	14.5	15.9	17.3	18.8	20.2
Capacity/Heaped (cubic ft)	17.4	19.1	20.8	22.6	24.2

- All Light Duty models feature channel top edge and 2 runners underneath
- All Standard Duty models feature enclosed top edge for strength and four runners underneath
- All Heavy Duty models include standard duty features plus inside vertical supports
- Optional double bevel bolt-on edge, holes are punched in if ordered with bucket (see page 19)

Machine Rating Capacity

Light Duty 2000 lbs. or less
Standard Duty 3000 lbs. or less
Heavy Duty 3000 lbs. +

MATERIAL BUCKET GRAPPLE



SPECS

	66"	72"	78"	84"
Model #	MBG66	MBG72	MBG78	MBG84
Overall Width x Height	67" x 31"	73" x 31"	79" x 31"	85" x 31"
Overall Depth	38"			
Grapple Jaw Opening	44"			
Cylinders/Cylinder Size	2 at 2" x 8" 3500 psi welded cross tube			
Approximate Weight (lbs)	925	960	1000	1035
Capacity/Struck (cubic ft)	15.9	17.3	18.8	20.2
Capacity/Heaped (cubic ft)	19.1	20.8	22.6	24.2

- Includes all features of Heavy Duty buckets above
- Dual grapple hooks that operate independently, made from 1/2" grade 50 plate (30% stronger)
- Removable bolt-on sides allow for extra capacity (included)
- Comes standard with cylinder guards
- Optional double bevel bolt-on edge, holes are punched in if ordered with bucket (see page 19)

OPTIONS

	Model #	Weight (lbs)
Rod End Cylinder Guard Kit	RG-WCT-KIT	18
Replaceable Weld-On Tooth Kit	96151	6



RG-WCT-KIT



96151

HIGH CAPACITY HD BUCKET

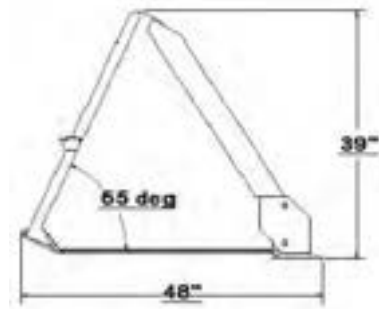
**COMMERCIAL DUTY,
BUILT HEAVY FOR
EVERYDAY USE**



⚙️ SPECS

	72"	84"	96"	108"	120"
Model #	HC72HD	HC84HD	HC96HD	HC108HD	HC120HD
Overall Width x Height	74" x 39"	86" x 39"	96" x 39"	108" x 39"	120" x 39"
Overall Depth	48"				
Approximate Weight (lbs)	1075	1180	1280	1435	1550
Capacity/Struck (cubic ft)	36.8	43.1	48.5	55.3	61.2
Capacity/Heaped (cubic ft)	46.9	54.8	61.8	66.3	77.3

- **Replaceable wear parts included** - cutting edge and front corners
- **Abrasion resistant steel** - outside bottom wear strips
- **Crack resistant frame** - large beam and post structure made of 1/4" steel on rear of bucket



5/8 X 8 BOLT ON CUTTING EDGES

⚙️ SPECS

	Model #	Weight (lbs)
5' Double Bevel-10 HOLES	60BOCE	80
5.5' Double Bevel-11 HOLES	66BOCE	85
6' Double Bevel-12 HOLES	72BOCE	95
7' Double Bevel-14 HOLES	84BOCE	115
8' Double Bevel-16 HOLES	96BOCE	120
8.5' Double Bevel-17 HOLES	102BOCE	135
9' Double Bevel-18 HOLES	108BOCE	145
10' Double Bevel-20 HOLES	120BOCE	160



- 5/8" hole diameter & 6" center to center spacing
- Hardware included
- Heat treated high carbon steel



MATERIAL HANDLING





LAND LEVELER



⚙️ SPECS

	72"	84"
Model #	LL72	LL84
Dimensions (LxWxH)	72" x 47" x 23"	84" x 47" x 23"
Approximate Weight (lbs)	550	565

- Features a 3/4" cutting edge on the front and back that allow for cutting & grading in both directions
- Weld on edges have holes for optional bolt-on cut edge
- Top bucket hooks allow you to carry your dirt bucket with while grading
- Features removable grate for sifting and scooping material and rock
- High visibility design works great for grading, back dragging or peeling sod
- Scarifier teeth and shanks made with AR400 steel

⚙️ OPTIONS

Model #

LLS72-KIT	72" Hydraulic Scarifier bi-directional teeth that dig 3" deep	115 lbs
LLG72-KIT	72" Bolt on grate kit, allows sifting and hauling of dirt	63 lbs
LLS84-KIT	84" Hydraulic Scarifier bi-directional teeth that dig 3" deep	125 lbs
LLG84-KIT	84" Bolt on grate kit, allows sifting and hauling of dirt	75 lbs



Shown with optional grate kit



Shown with optional scarifier

SAND SPREADER



SNOW REMOVAL

⚙️ SPECS

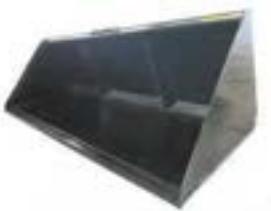
Model #	SS10
Overall Width x Height	45" x 39"
Overall Depth	39"
Cubic Feet	10
Spread in Feet	5-35'
Approximate Weight (lbs)	590



- Variable speed flow control with check valve to prevent reverse operation
- 18" diameter pan spreads up to 35'
- 3 ft square hopper features 4 adjustable doors to control material flow
- Low profile self loading hopper features a cutting edge for easy loading
- Features rotating agitator to ensure all material is cleaned out of hopper
- Spreads almost anything - sand, grass, seed, fertilizer, salt, lime, etc.



SNOW BUCKET



⚙️ SPECS

	6'	7'	8'	8.5'	9'	10'
Model # Solid Back	SB72SD	SB84SD	SB96SD	NA	NA	NA
Model # Mesh Back	SB72MB	SB84MB	SB96MB	SB102MB	SB108MB	SB120MB
Overall Width x Height	72" x 31"	84" x 31"	96" x 31"	102" x 31"	108" x 31"	120" x 31"
Overall Depth	41"					
SD Approx. Weight (lbs)	610	645	700	NA		
MB Approx. Weight (lbs)	635	660	730	820	850	870
Capacity/Struck (cubic ft)	25.5	30	34	36	38	42.5
Capacity/Heaped (cubic ft)	30.6	36	40.8	43.2	45.6	51

- Closed top edge for strength heavy duty 3/16" material
- All snow buckets feature 20° roll back & vertical bracing
- Optional double bevel bolt-on edge (See page 19), holes are punched in if ordered with bucket



PALLET FORK

WALK-THROUGH BRICKGUARD



PF22K42S45



PF40K48WT45



PF55K48WT45



PF55K48WT54

⚙️ SPECS

Model #	Overall Width x Height	Usable Tine Length	Thickness of Tines	Approximate Weight (lbs)	Load Rating Capacity (lbs)**
PF22KS45	45" x 26"	N/A		95	2200
PF22K42S45	45" x 29"	42"	1 3/16"	225	
PF40KWT45	45" x 34"	N/A		135	4,000
PF40K48WT45	45" x 37"	48"	1 3/8"	330	
PF55KWT45	45" x 34"	N/A		190	5,500
PF55K48WT45	45" x 37"	48"	1 1/2"	410	
PF55KWT54	54" x 34"	N/A		225	
PF55K48WT54	54" x 37"	48"	1 1/2"	440	

- Standard class II forks (16" rail spacing)
- Excellent visibility of tines
- Walk through* eases entry and exit of machine, works well with swing out cab doors
- Brickguard is flush with front of tine uprights for better load support*

* Does not apply to 2,200 lb. pallet fork

** Load Rating Capacity per pair at 24" from carriage frame

⚙️ OPTIONS

	Model #	Weight (lbs)	Load Rating Capacity (lbs.)**
Class II - 3 x 42 x 1 3/16" PF Tine	PF22K42TINE	73	2200
Class II - 4 x 48 x 1 3/8" PF Tine	PF40K48TINE	85	4000
Class II - 4 x 42 x 1 1/2" PF Tine	PF55K42TINE	89	5500
Class II - 4 x 48 x 1 1/2" PF Tine	PF55K48TINE	107	
Class II - 4 x 48 x 1 3/4" PF Tine	PF62K48TINE	121	6200
Class II - 4 x 60 x 1 3/4" PF Tine	PF62K60TINE	145	
Class II - 4 x 72 x 1 3/4" PF Tine	PF62K72TINE	168	
Side Step (fits all models)	07944	2	NA



Pallet Fork
Tine



07944

FORK EXTENSIONS



⚙️ SPECS

Model #	Dimensions	Weight (lbs)
FORKEXT72 Recommended for 48" tines	75" x 6" x 3"	104/ pair
FORKEXT96 Recommended for 60" tines	98" x 6" x 3"	138/ pair

- Made out of 1/4" steel
- Slip on feature, no bolts or wrenches
- Fits tines up to 2" thick & 5" wide

*Fork extensions should never be considered load bearing. They are designed to improve stability and balance of load.

FORK HITCH MOVER

SPECS

Model #	Dimensions	Weight (lbs)
FORKHITCH2	29" x 15" x 6"	50

- Forklift mounted, 2" receiver hitch
- Slips over 2 pallet fork tines & chains to brickguard
- Fits tines up to 1 3/4" x 5" x 48" standard taper



3 PT. GOOSENECK TOW BAR

SPECS

CATEGORY II, III N, III W

Model #	3PTGTB
Overall Width x Height	46" x 23"
Overall Depth	20"
Rating-Gross Trailer Weight (lbs)	30,000
Rating-Trailer Tongue Weight (lbs)	10,000
Approximate Weight (lbs)	125

OPTIONS

	Model #	Weight (Lbs)
Category II Pin Kit - 1 1/8" - under 100/120 HP	3PTPKII	7
Category III Pin Kit - 1 7/16" - over 100/120 HP	3PTPKIII	12
Light Plug Adapter - 7 pin round male to 7 blade round female	ADP7P-7B	1

- One model will work on Cat. II & Cat III narrow or wide
- 2-5/16" Heavy duty forged ball
- Requires a pin kit (sold separately)
- Includes safety chain hooks



EQUIPMENT MOVER

SPECS

STANDARD PREMIUM

Model #	QTEM	QTEM2
Overall Width x Height	45" x 18"	45" x 21"
Overall Length	17"	31"
Approximate Weight (lbs)	135	150

OPTIONS

	Model #	Weight (lbs)
QTEM2 ONLY - Optional Ball Hitch	3209-C	3

- Built heavy duty to handle moving loaded wagons
- Storage for 2 extra receivers on upper outside corners
- QTEM2 features extended length of receiver allowing operator to view hitch from cab



QTEM



QTEM2

TELESCOPING BOOM



⚙️ SPECS

Model #	TB8X21
Overall Width x Height	46" x 22"
Overall Length (Collapsed/Extended)	96" / 255"
Cylinders/Cylinder Size	2 at 2" x 48" - 3500 PSI trunnion mount
Approximate Weight (lbs)	650

- 3 Stage Extension: the first 2-48" stages provide 96" of hydraulic powered extension and the 3rd stage provides over 60" of manual extension with a spring loaded lock pin
- Accepts a standard 2 1/2" class 5 receiver hitch to allow flexibility for multiple hitch options
- 2 hitch storage holders on main body are included
- Lifting capacity: Depends on extension angle, length and machine operating capacity
- Recommended for use with machines having a Rated Operating Capacity (ROC) of more than 2000 lbs. but not to exceed 4000 lbs.
- Use the following chart to determine what the lifting capacity will be with this boom on your machine in various positions

MACHINE RATED OPERATING CAPACITY (ROC)

	2000	2500	3000
Max Load Horizontal (Collapsed)	870 lbs	1180 lbs	1490 lbs
Max Load Horizontal (Fully Extended)	280 lbs	410 lbs	540 lbs
Max Load @ 70 deg Vertical (Collapsed)	2000 lbs	2500 lbs	3000 lbs
Max Load @ 70 deg Vertical (Fully Extended)	975 lbs	1290 lbs	1600 lbs

⚙️ OPTIONS

	Model #	Weight (lbs)
Teleboom D-Ring Hitch	TB-DRH	2
Teleboom Roof Rake - 10' long, 4' wide, has 1-1/2" rubber on bottom side	TB-RR10	207



Shown with optional TB-DRH



TB-RR10



QUICK-TACH PLATES

- All Quick-Tach plates feature a 1/2" thick top flange and are not painted

SPECS



Model #	Description	Weight (lbs)	Dimensions L x W x H
1/4QT1P	1/4" - 1 Piece QT Plate	45	45" x 19" x 3"
3/8QT1P	3/8" - 1 Piece QT Plate	65	45" x 19" x 3"
3/8QTFULLST	3/8" - Full Back QT Plate	100	45" x 19" x 3"
1/2QTFULLST	1/2" - Full back QT Plate	135	45" x 19" x 3"
MQTP	1/4" - Male QT plain make your own brackets	100	44" x 18" x 4"
GLOBAL TABS	Tabs Only	14	6" x 5" x 3"

QUICK-TACH PLATES & ADAPTERS



QUICK-TACH PLATES

[CONTINUED]

- All Quick-Tach plates feature a 1/2" thick top flange and are not painted

⚙️ SPECS

Model #	Description	Weight (lbs)	Dimensions L x W x H
GLOBAL2P	1/2" - Tabs on Back Plates 2 piece	46	45" x 21" x 4"
JD120-5002P	JD 120-500 QT Plate Set, 2 piece	70	50" x 21" x 3"
JD240-2652P	JD240-265 plate set, 2 piece	40	47" x 18" x 3"
JD600-7002P	JD600-700 QT Plate Set	92	49" x 23" x 7"
3PT1P	3 point weld on bracket, fits Cat II & Cat III narrow or wide	67	46" x 22" x 6"



QUICK TACH ADAPTERS

- All Adapters are painted black.

⚙️ SPECS



Model #	Description	Weight (lbs)	Dimensions L x W x H
MQTP-GLOBAL	MQTP-1/4" Global-1/2" - Male QT to Global Adapter	126	45" x 21" x 6"
MGLOBAL-QTP	Male Global to universal skid loader adapter	185	46" x 22" x 9"
MQTPJD120-500	Male QT to JD120-500 Loaders	125	50" x 21" x 5"
MQTP-JD145-158	Male QT - pins to JD 145, 146, 148 and 158 loaders (pins not included)	155	45" x 19" x 9"
MQTP-JD240-265	Male QT to JD240-265 loaders	140	47" x 18" x 7"
MQTPJD600-700	Male QT to JD600-700 Loaders	185	49" x 23" x 10"
MQTP-CHALMERS500	Male QT to Chalmers 500 Series loader pin-on (pins not included)	125	45" x 18" x 7"
MQTP-MASSEY/AGCO	Male QT to Massey/AGCO loader	135	47" x 22" x 7"
MQTP-TV140	Male QT to NH TV140, 145 & 6070	360	71" x 26" x 15"

3 POINT TO QUICK-TACH PLATE

⚙️ SPECS

Model #	3PT-QTP
Dimensions (LxWxH)	13" x 47" x 23"
Approximate Weight (lbs)	240

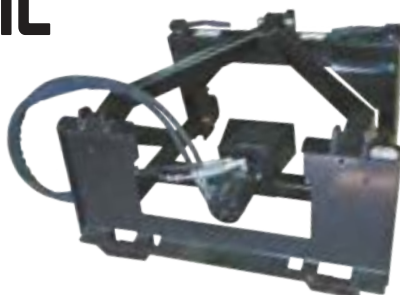


- Male 3 PT to universal skid loader adapter
- Allows use of Cat I, II, and III 3 PT attachments on a skid steer
- Lower arms adjust from 18" out to 43" center to center
- Assembly also includes a receiver hitch and hitch storage tubes

3 POINT TO QUICK-TACH PLATE WITH HYDRAULIC DRIVE PTO

⚙️ SPECS

Model #	3PT-PTO
Dimensions (LxWxH)	40" x 46" x 24"
Approximate Weight (lbs)	465



- Category II/III narrow 3 PT Quick Hitch to Female Quick Hitch Adapter with hydraulic drive 540 PTO
- 15-24 GPM hydraulic flow recommended
- Outputs 30 horse power at 24 GPM, 3,000 PSI
- Includes anti-reversing relief valve protected hydraulic motor

NEW PRODUCTS COMING SOON

- Hydraulic Sliding Pallet Fork
- Brush Mower
- Stump Bucket Grapple
- Snow Pusher



LIMITED WARRANTY AND TERMS & CONDITIONS OF SALE

The following limited warranty, and terms and conditions of sale (the "Limited Warranty") apply to all equipment, products, parts, and goods (any of the foregoing are referred to herein as "Equipment") sold by Messer Attachments, LLC ("Messer"):

- 1 COVERS ALL EQUIPMENT.** Each purchase of Equipment by a purchaser is expressly made conditional on purchaser's assent to the terms and conditions in this Limited Warranty.
- 2 LIMITED WARRANTY.** Messer warrants that for a period of 24 months from the date of purchase, the Equipment will remain free from defects in material and workmanship under normal use and proper maintenance. Messer's obligation under the warranty shall be limited to the repair or replacement (at Messer's option) of the Equipment. Notwithstanding the foregoing, if the Equipment is used for commercial purposes or is rented or leased out by the purchaser, then, the foregoing warranty shall only be for a period of 180 days and not 24 months.
- 3 NO WARRANTY FOR EQUIPMENT COMPONENTS FROM THIRD PARTIES.** Notwithstanding the limited warranty terms set forth above, MESSER OFFERS NO WARRANTY WHATSOEVER WITH RESPECT TO ANY COMPONENTS OF THE EQUIPMENT MADE OR PROVIDED TO MESSER BY OTHER MANUFACTURERS, PRODUCERS, OR SELLERS (the "Purchased Components"). The sole and exclusive warranty for each the Purchased Components shall be limited to the express written warranty with respect to the Purchased Component as provided by the manufacturer, producer, or seller of such Purchased Component. Messer's responsibility and liability for the Purchased Components shall be limited to the assignment of the Purchased Components' express written warranties applicable to the Purchased Components. Purchased Components include, without limitation, the following: axles, tires and rims; trailer hitch components and jacks; hydraulic pumps, motors, cylinders and components; and bales spears, pallet tines, and bucket teeth.
- 4 NO OTHER WARRANTIES.** THE FOREGOING REPAIR AND REPLACEMENT OBLIGATIONS IN SECTION 2 ARE IN LIEU OF ALL OTHER WARRANTIES, LIABILITIES AND OBLIGATIONS, INCLUDING ALL WARRANTIES OF MERCHANTABILITY, OF FITNESS FOR A PARTICULAR PURPOSE OR OTHERWISE, EXPRESSED OR IMPLIED IN FACT OR BY LAW, AND STATE MESSER'S ENTIRE AND EXCLUSIVE LIABILITY AND PURCHASER'S EXCLUSIVE REMEDY FOR ANY CLAIM IN CONNECTION WITH THE SALE AND PURCHASE OF EQUIPMENT (AND ALL COMPONENTS THEREOF), THEIR DESIGN, SUITABILITY FOR USE, INSTALLATION OR OPERATIONS.
- 5 LOCATION OF WARRANTY REPAIRS.** All warranty repairs pursuant to this Limited Warranty shall be made at Messer's corporate manufacturing plant, or other location as determined by Messer, at its discretion. Purchaser shall be responsible for and pay for any transportation expenses necessary for Limited Warranty repairs.
- 6 LIMITED WARRANTY VOIDABLE.** The limited warranty herein is void and deemed waived if (a) the proper registration form for the Limited Warranty, as supplied by Messer, is not completed in its entirety and returned to Messer within 45 days of the Equipment purchase; or (b) purchaser fails to give written notice to Messer of any alleged defect under the limited warranty herein within 20 days of its discovery; or (c) purchaser or parties other than Messer or its authorized representatives attempts to remedy or fix the alleged Equipment defects; or (d) purchaser has used the Equipment for purposes it was not intended to be used for; or (e) purchaser has not operated the Equipment in a manner consistent with Messer's instructions for the Equipment; or (f) the Equipment has been modified, altered, abused, or misused; or (g) the Equipment has been damaged pursuant to accident, fire, flood, or other Act of God.
- 7 NO CONSEQUENTIAL DAMAGES.** IN NO EVENT SHALL MESSER BE LIABLE FOR ANY DIRECT, INDIRECT, SPECIAL OR CONSEQUENTIAL DAMAGES WHATSOEVER, AND MESSER'S LIABILITY, UNDER NO CIRCUMSTANCES, WILL EXCEED THE PRICE PAID FOR THE EQUIPMENT FOR WHICH LIABILITY IS CLAIMED.
- 8 GOVERNING LAW.** This contract shall be governed by the laws of the State of Minnesota.
- 9 ARBITRATION.** Any controversy or claim arising out of or relating to the limited warranty provided herein, or any alleged breach thereof, shall be settled exclusively by arbitration in accordance with the Rules of the American Arbitration Association, and judgment upon the award rendered by the arbitrator may be entered in any court having jurisdiction thereof. The arbitration shall be conducted in Minneapolis, MN, by one arbitrator selected by Messer and Purchaser, or, if they cannot agree, the President of the American Arbitration Association.

100% SATISFACTION GUARANTEED RETURN POLICY

After you purchase any product from Messer Attachments LLC, if you feel that it fails to live up to your expectations for any reason, return it to us within 30 days of the invoice date, and we will immediately refund you 100% if the purchase price.

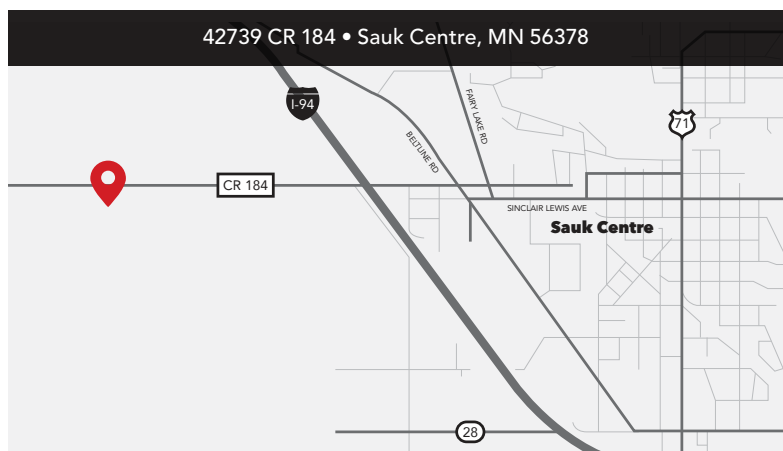
PLEASE KEEP IN MIND THAT:

- You will be responsible for return shipping costs
- For drop ship orders, a 20% restocking fee will apply.



CUSTOM ORDERS

Because they're specifically tailored to your individual needs and are therefore not resellable, we're unable to accept returns on custom-ordered items. We will however make every reasonable effort to resolve the issue to improve your satisfaction.



📞 320.352.3477 | 833.352.3477 🖥️ [MesserAttach.com](https://www.messerattach.com) 📱 [Messer Attachments](https://www.facebook.com/MesserAttachments)



WE'D LOVE TO HEAR FROM YOU!

Have feedback on an existing product...or need help bringing a new product to life? **Contact us today!**
sales@messerattach.com

DISTRIBUTED BY: